

RWTH Incubation Program

The Spring Batch 2022

Building Europe's Leading Tech Incubator

Program overview

Our early-stage start-up program

The RWTH Incubation Program is an early-stage start-up program, with a focus on deep-tech, run to support founders in Europe to get their start-ups off the ground. With the vast research landscape that RWTH University has to offer as well as our broad corporate and investor networks, this publicly funded **no equity stake program** was established to support entrepreneurs to grow successful start-up ventures.

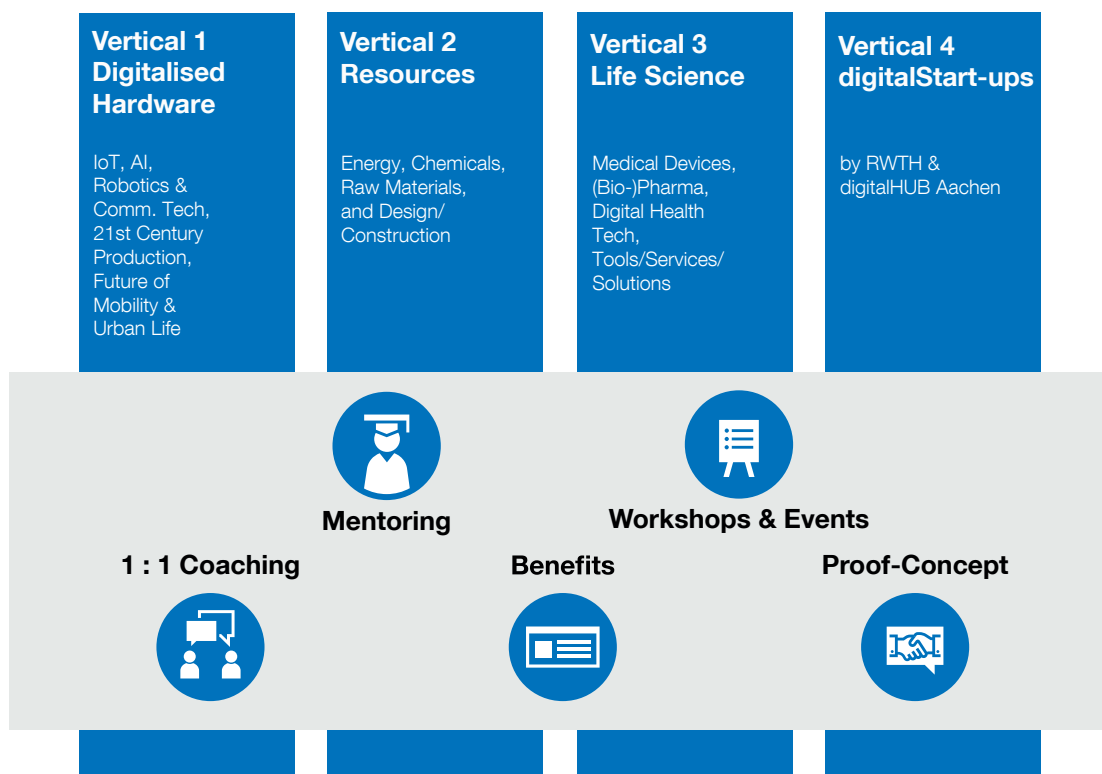
„Our vision is to build Europe’s leading tech incubator and to help establish the NRW region as the place-to-be for Germany’s deep-tech start-ups. “

The RWTH Incubation Program runs for the duration of 4-months and is designed to give start-ups the professional support they need to make their business model sustainable and ready for investment - all around our six tech-focused incubation verticals, supported by RWTH institutes and our strong partner network.

This program will help you to build your prototype, get your product to market, and secure additional early funding - by giving you access to our deep network & setting you up for success! Our aim is to help you:

- Gain market access
- Work on product-market fit
- Close your next funding round

Program overview and key offerings



Key program elements

Our program elements are individually targeted to your needs

- Duration of **4 months**
- **Two batches per year**, starting always in January & July
- Focus on **deep-tech start-ups**
- Four focused **incubation verticals** supported by RWTH institutes & our partner network
- Extensive **coaching, mentoring**, expert workshops & networking **events**
- Free benefits and **access to co-working space** at Collective Incubator or digitalHUB & **mechanic workshop** for all teams

Workshops & Events

Structured curriculum with experts & peers to help you grow & build your network



Mentoring

Benefit from the experience of one of our selected mentors



1 : 1 Coaching

Profit from an individual coach as your sparring partner & guide throughout the program

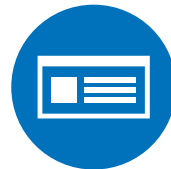


RWTH Incubation Program



Proof-Concept

Get access to our key account partners to pilot your product & get real-live feedback



Benefits

Use your budget to get access to our offered benefits



Incubation Verticals

Expert advice, resource access & network in our 4 topic specific verticals

Meet our start-ups

RWTH Incubation Program start-ups



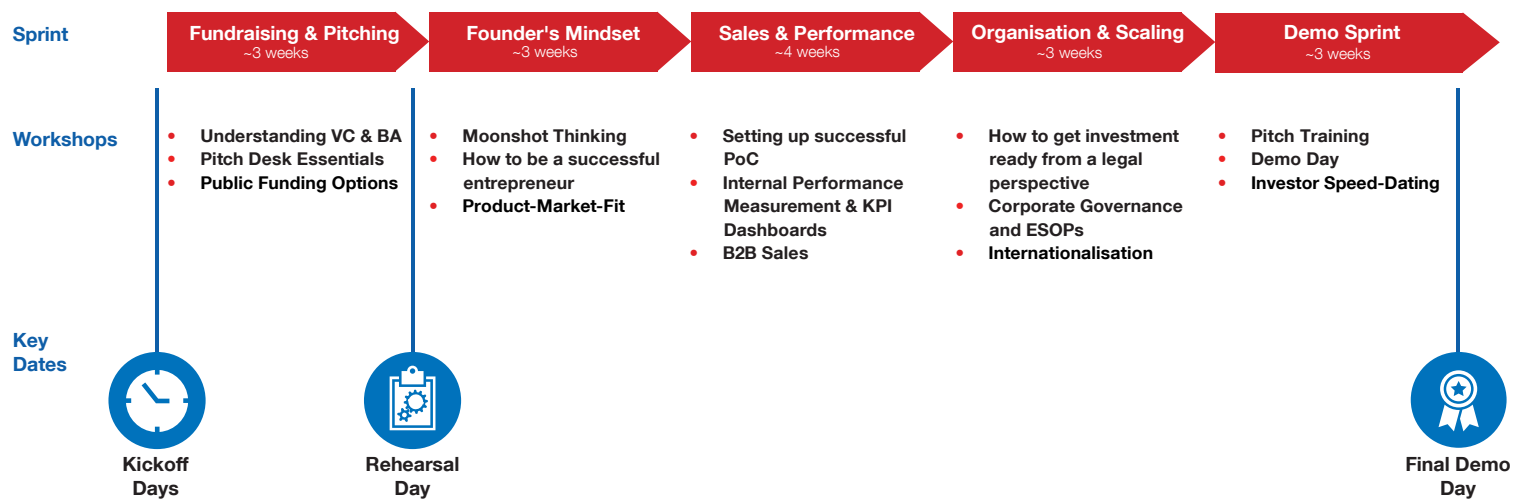
How does the Incubation Program work?

The program takes early-stage start-ups and supports founders, from valuable mentorship and coaching to a broad corporate network and the vast RWTH research landscape. The program aims to help start-ups establish market entry strategies, engage with corporate partners and investors, and overcome their largest, most complex hurdles.

The program is 4-months long and is executed in a hybrid format, meaning a combination of digital and live events, therefore no relocation is required. The program curriculum is organized according to five sprints, each addressing different challenges our start-ups encounter. Throughout the program, start-ups will receive:

- Support from mentors, corporates, RWTH institutes, VC and angel investor networks, and industry partners,
- Access to exclusive workshops with guest speakers,
- Free access to office space at Collective Incubator and digiHUB Aachen,
- Community events and networking opportunities with VCs, angel investors, and others connected to industry.

Overview of a typical program curriculum including workshops and events



What are the program key offerings?

- Clear and tailored offerings with a focus on early-stage deep-tech start-ups
- A final event – "A demo day" – when start-ups pitch their ideas to raise first big funding
- We do not take an equity stake in your start-up
- No relocation necessary as we can do the mentoring and workshops remotely
- We connect you directly with our leading corporate partners and mentors
- Extensive coaching, mentoring, expert workshops & networking events
- Access to Collective Incubator or digitalHUB Aachen co-working space & mechanic workshop

Who we are looking for?

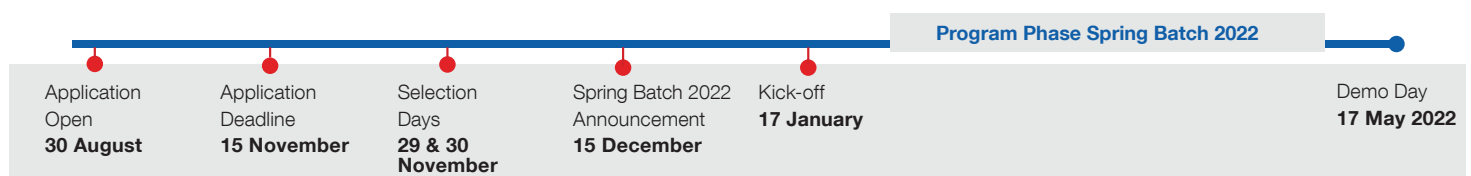
- Motivated start-up teams with a clear deep-tech-focused feasible business plan
- One does not need to be a current student or researcher of the RWTH Aachen University to qualify for the program - all founding teams from Europe are welcome to apply.
- First pre-seed investment (e.g. EXIST, bootstrapped) or a remaining runway for at least 6 months.
- Full-time commitment from founders, we expect to see at least one representative of the start-up in attendance at all program work shops and meetings. Participation will amount to approximately 3-5 hours per week.

How does the application process work?

Application Assessment: All applicants will be judged by our mentor panel of experienced business leaders, investors, and entrepreneurs, all of whom have either started their own business or have funded a successful start-up business.

Stages in the judging process:

- **Screening:** Promising applicants will first receive a 15-minute "Get to Know Each Other" phone call and will be screened for interview selection.
- **Interview:** Finalists will be invited to a 30-minute in-person/ digital meeting with our selection committee at the end of November 2021.
- **Selection:** Selected start-ups will be notified by mid December.



Where to apply?

[Apply here.](#)

Or via the QR-Code.

Check out our application page and apply by 15 November 2021.



Stay tuned

 RWTH Innovation

 rwth_innovation

 RWTH Innovation Entrepreneurship Center

 RWTHInnovation

Meet the Team



**Prof. Malte
Brettel**
Vice-Rector RWTH
Aachen University,

Managing Director
RWTH Innovation
GmbH



**Marius
Rosenberg**
Managing Director
Exzellenz Start-up
Center



**Marvin
Kaes**
Head of RWTH
Entrepreneurship
Center

kaes@time.
rwth-aachen.de



**Dorina
Birsanu**
Start-up Scouting
& Communications,
Incubation Program

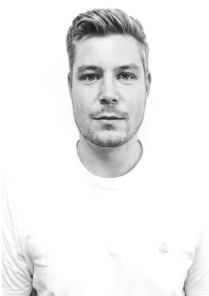
birsanu@time.
rwth-aachen.de



**Louisa
Desel**
Program Manage-
ment, Mentorship
& Network,
Incubation Program
desel@time.
rwth-aachen.de



**Thaksan
Sothinathan**
External & Teams
Coaching, Start-up
Board, Incubation
Program
sothinathan@time.
rwth-aachen.de



**Julian
Fischer**
Curriculum,
Incubation Program

julian.fischer@time.
rwth-aachen.de